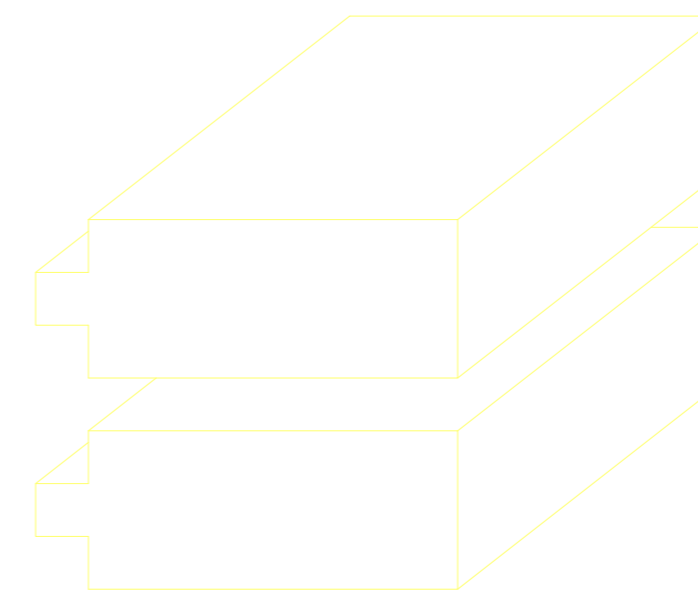
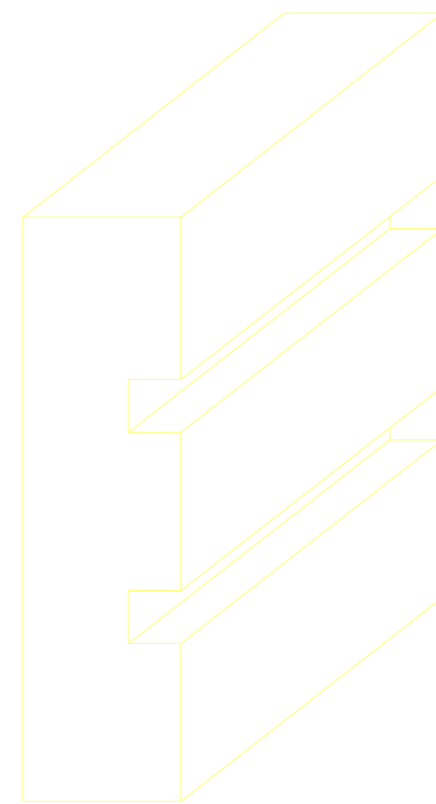
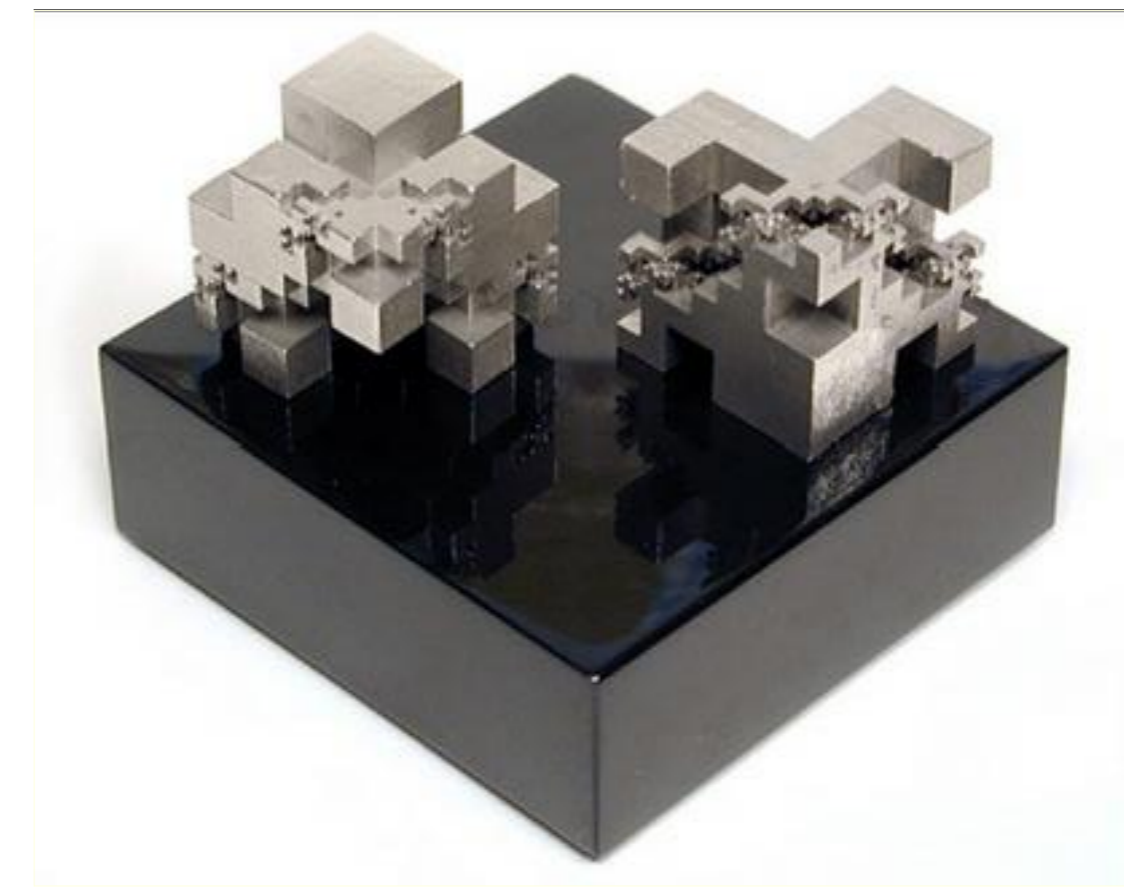


CENTRO SOCIAL EN EL RISCO
DE SAN NICOLÁS



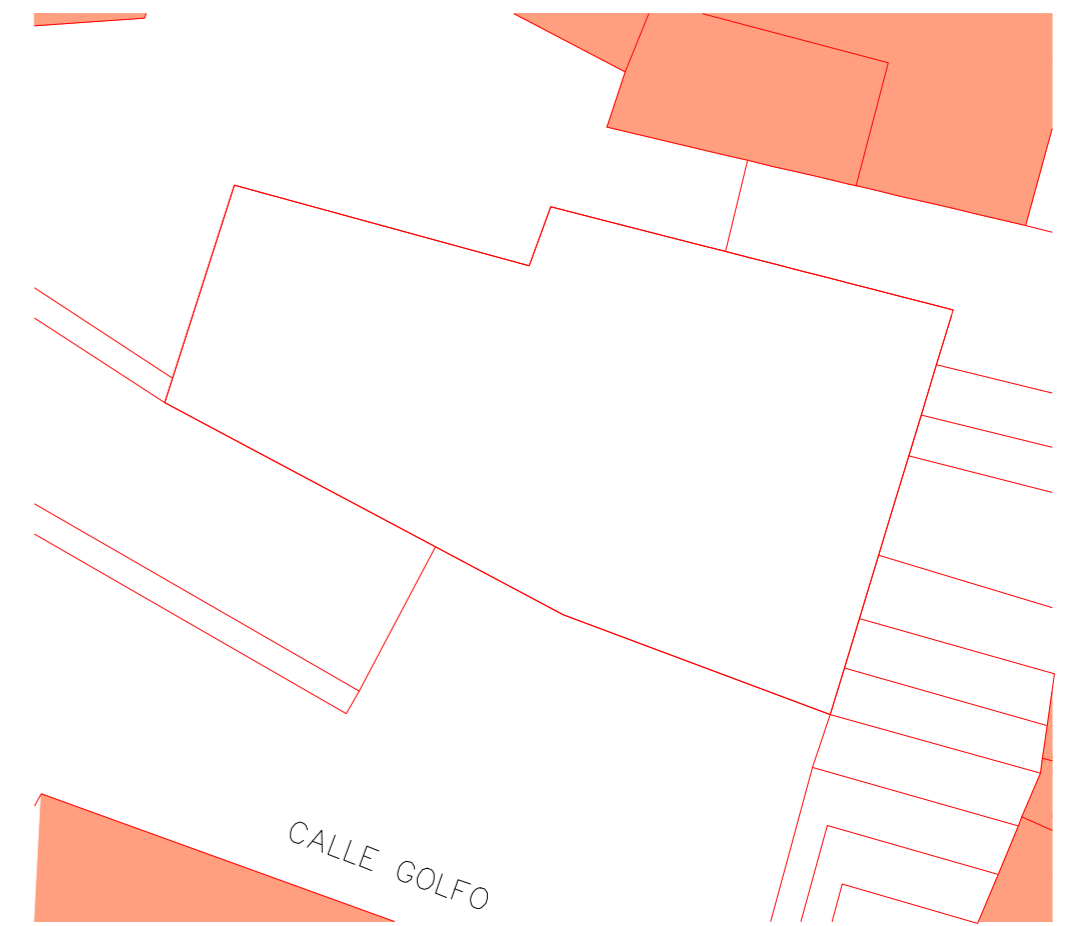
ESCALA 1:100

LEMES PÉREZ, ESTEFANÍA

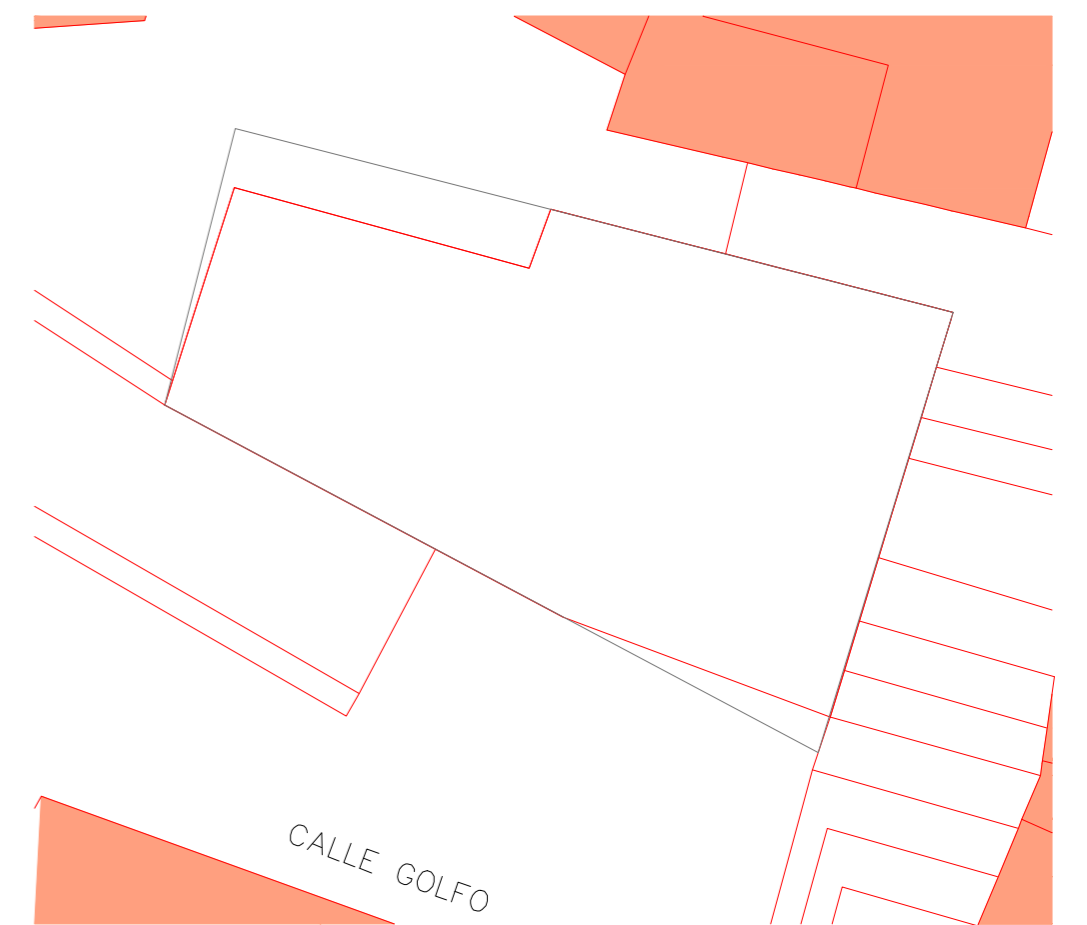
SITUACIÓN



INSERCIÓN URBANA

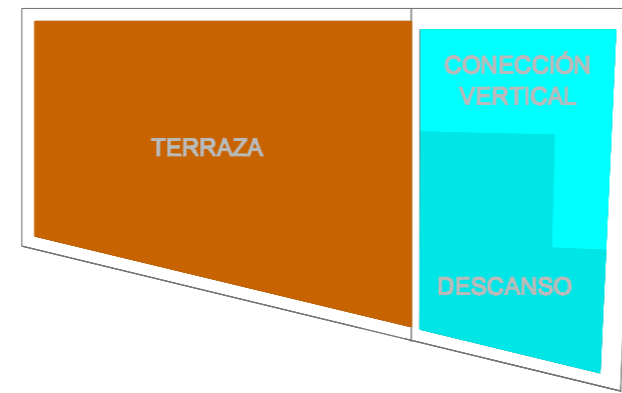
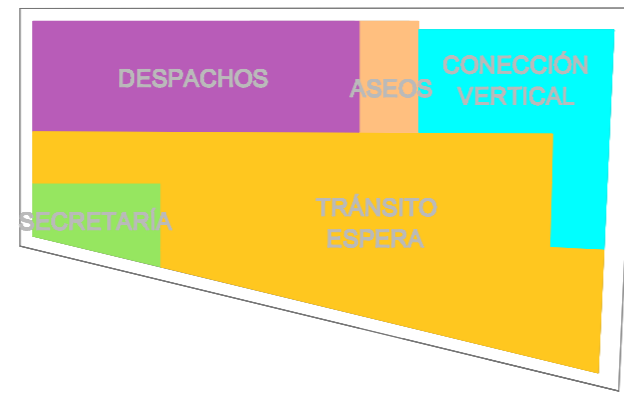
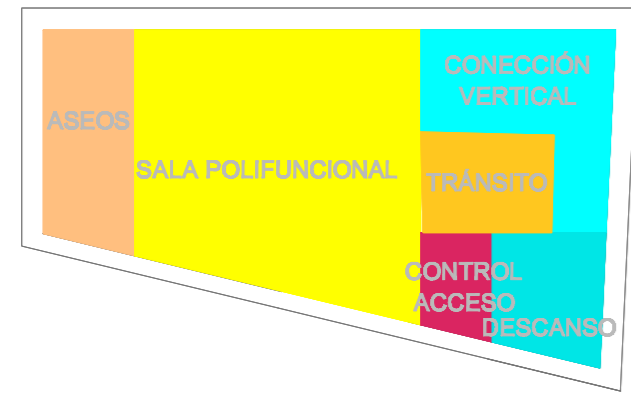


PARCELA DADA

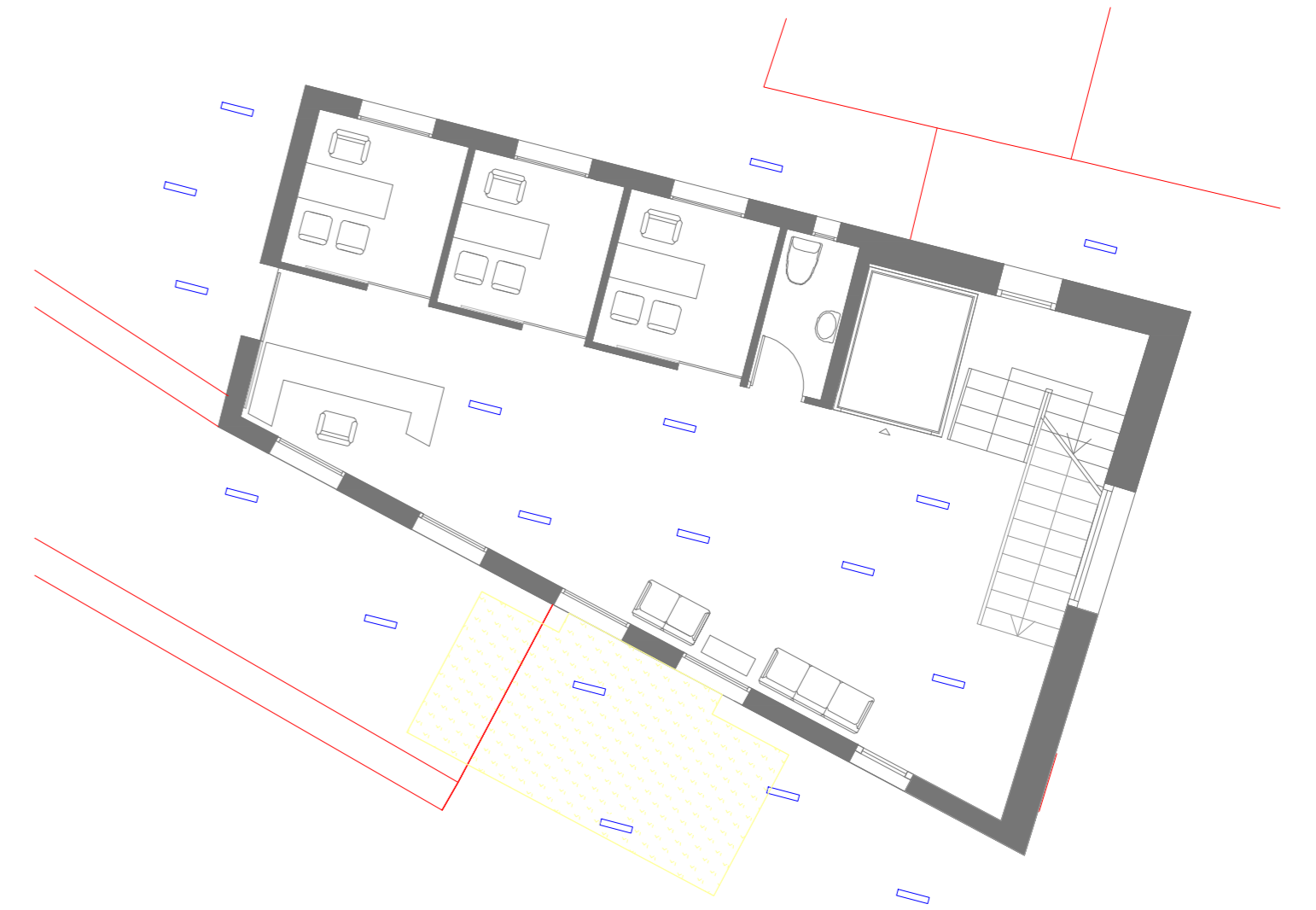


PARCELA ACTUAL

PLANTAS



PLANTA BAJA

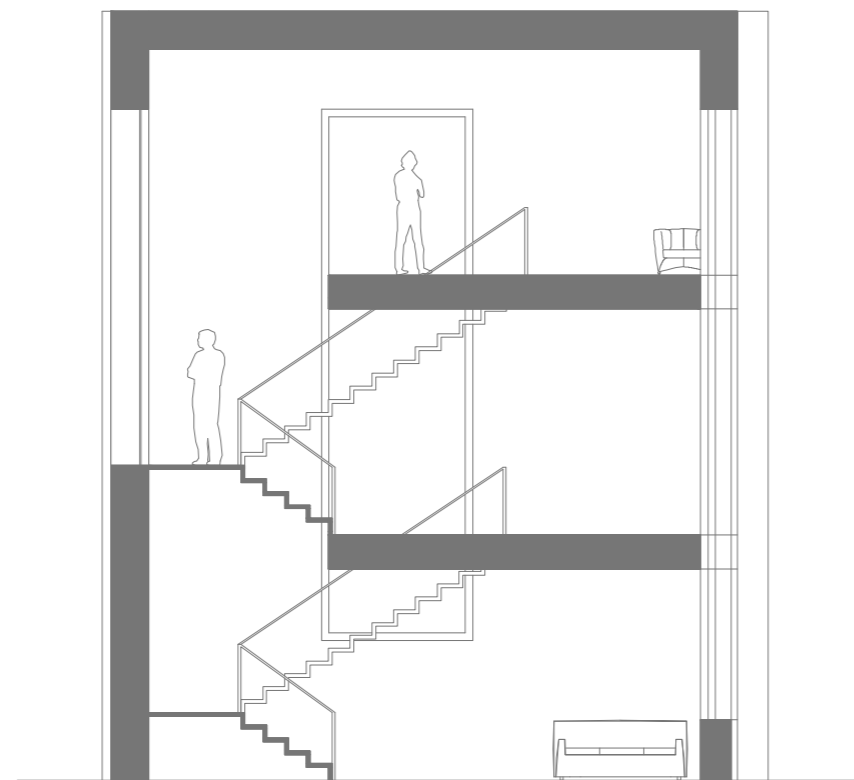
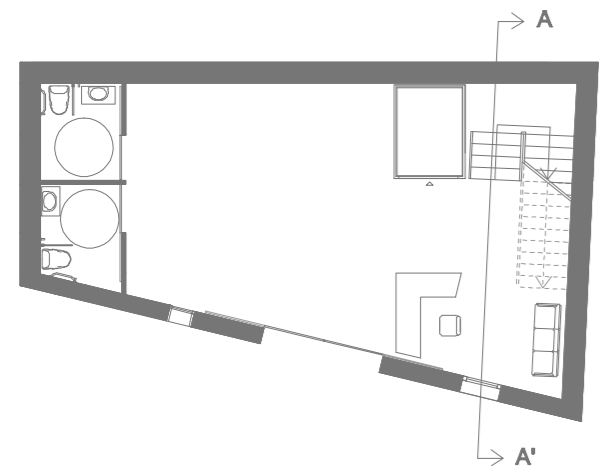


PLANTA PRIMERA

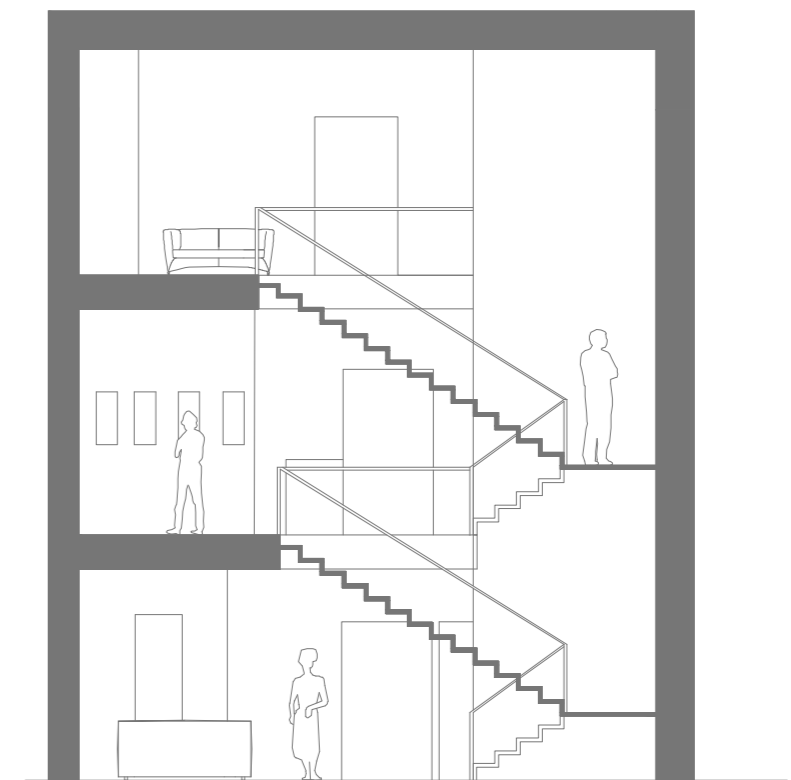
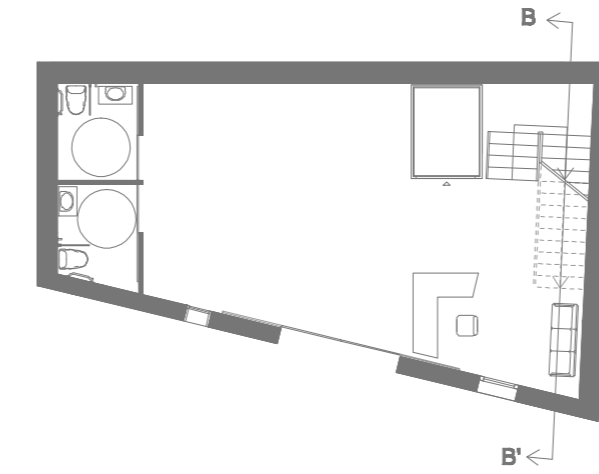
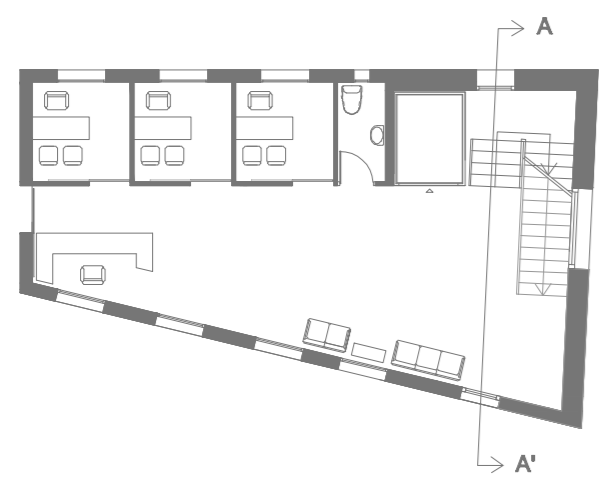


PLANTA SEGUNDA

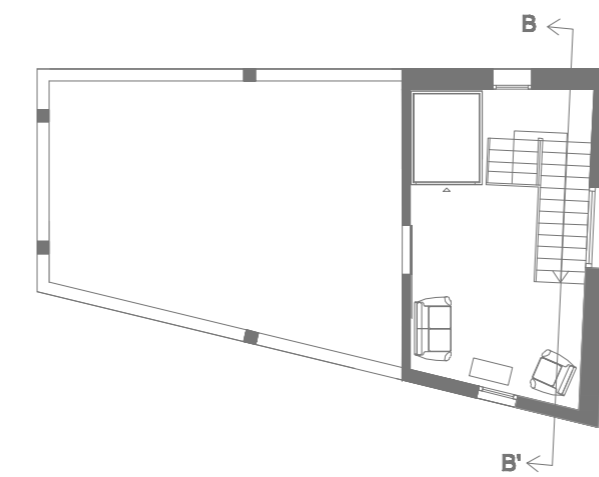
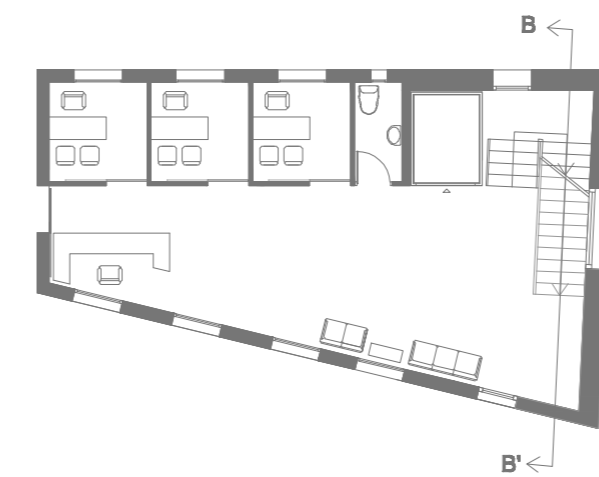
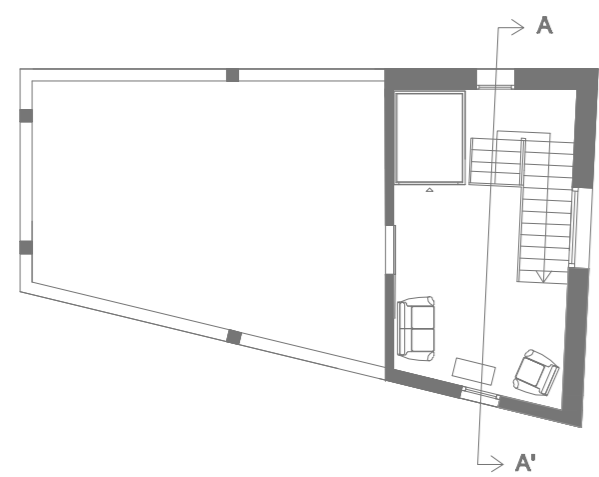
SECCIONES



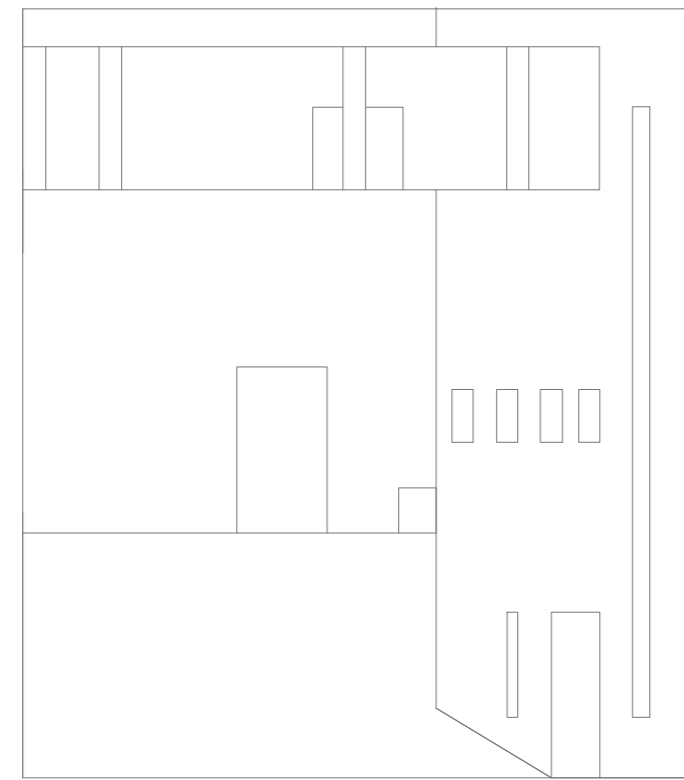
SECCIÓN A - A'



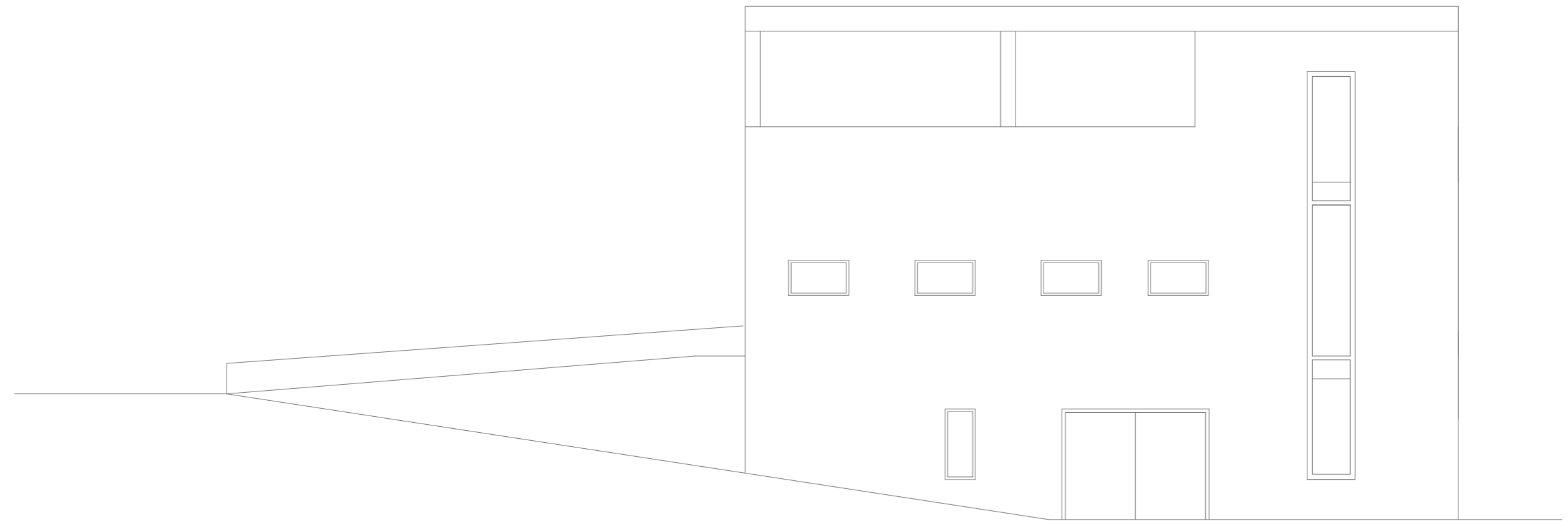
SECCIÓN B - B'



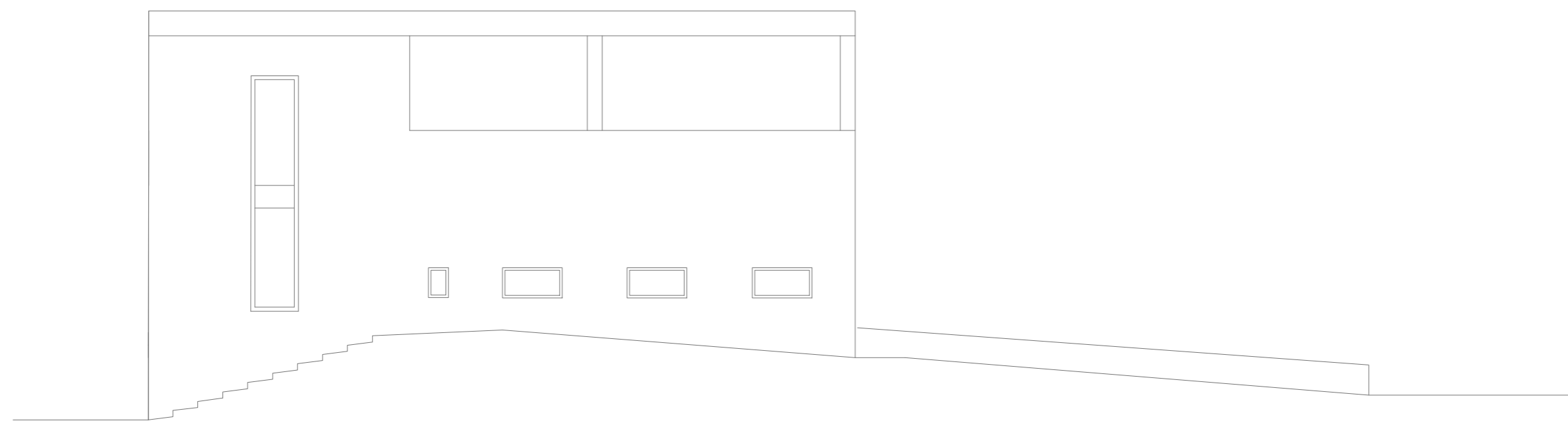
ALZADOS



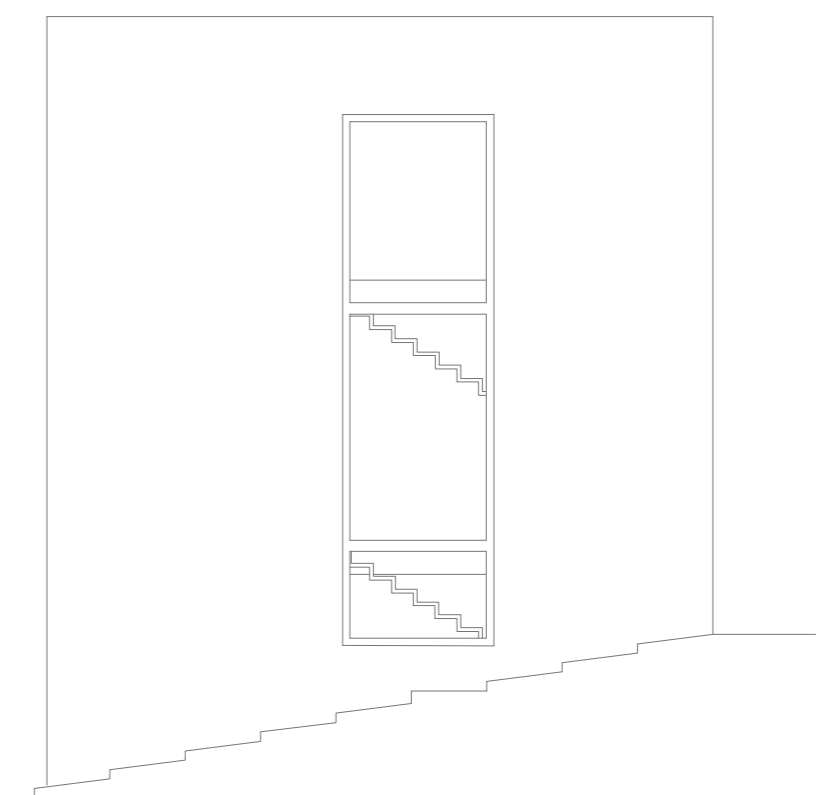
ALZADO LATERAL IZQUIERDO



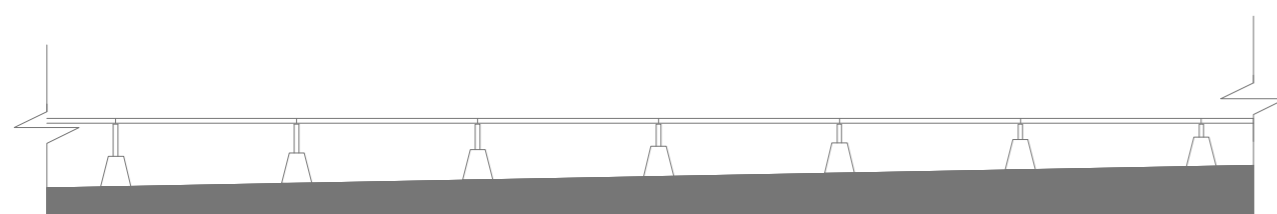
ALZADO FRONTAL



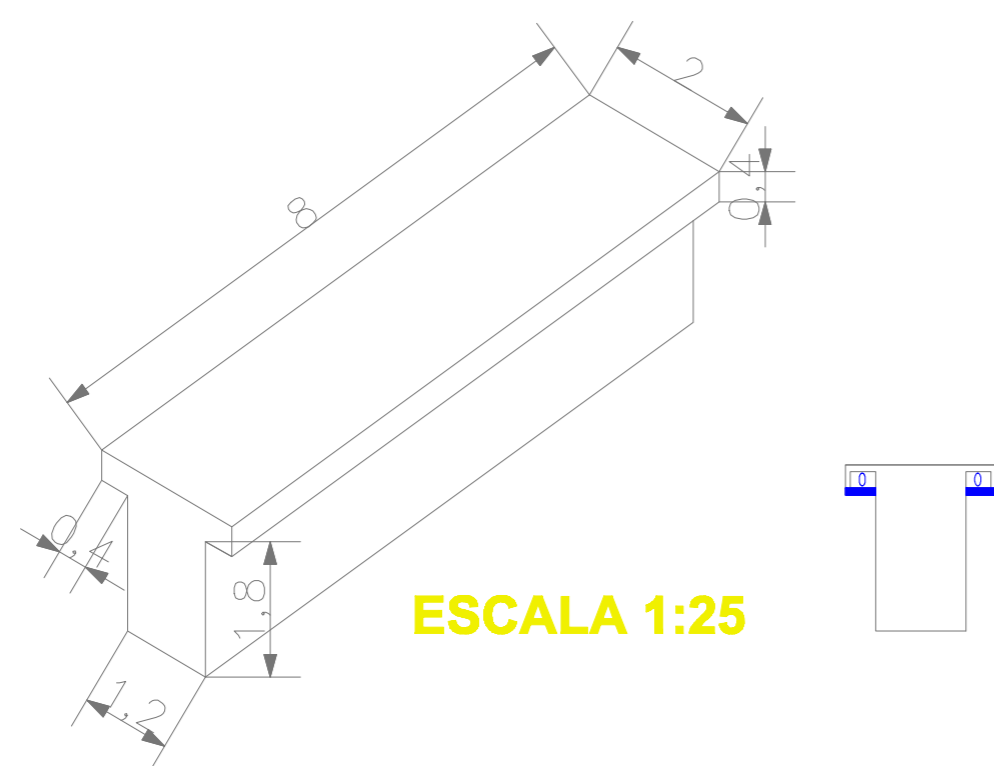
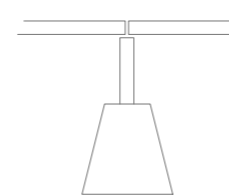
ALZADO TRASERO



ALZADO LATERAL DERECHO



SOLUCIÓN DE UNA CUBIERTA TRANSITABLE CON LA DEBIDA EVACUACIÓN DE AGUA Y EL MODO DE UTILIZACIÓN DE PIVOTES



ESCALA 1:25

LUCES DE COLOR INCORPORADAS EN UNOS HUECOS DE HORMIGÓN A LOS QUE SE LES ADJUNTA UN VIDRIO EN LA PARTE SUPERIOR DE DICHO HUECO PARA PODER REALIZAR EL CONVENIENTE CAMBIO DE BOMBILLAS, LEDS O SIMILARES, EVITANDO EL USO DE LAS TRADICIONALES FAROLAS Y CONSIGUIENDO AMPLITUD DE ESPACIOS.

EL ALUMBRADO PÚBLICO DE ESTE CENTRO SE REALIZARÁ MEDIANTE ESTOS BANCOS Y A TRAVÉS DE LUCES ADHERIDAS EN EL PAVIMENTO REPRESENTADAS EN DICHS PLANOS EN FORMA RECTANGULAR DE COLOR AZUL.

